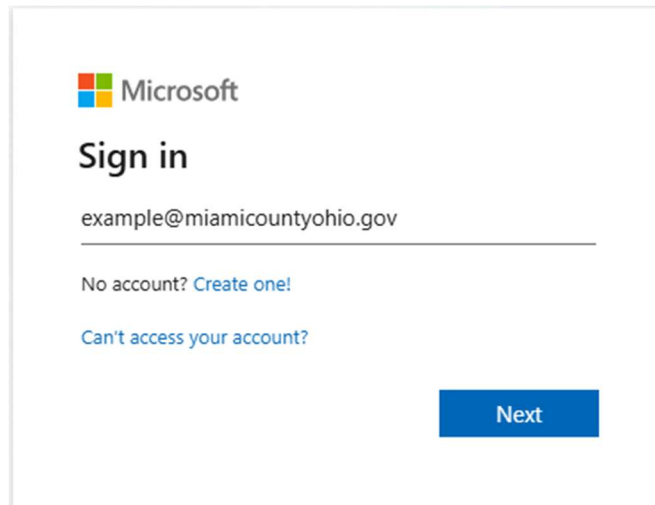


Miami County MultiFactor Authentication Configuration

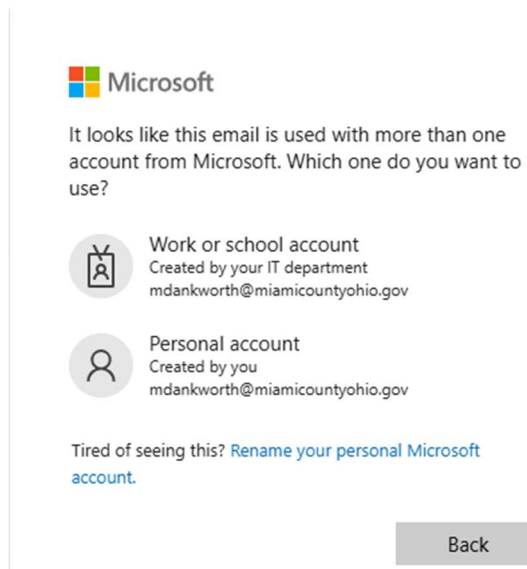
Please note these cannot be shared. Once configured for you, the device can only be used by you.

Configuration for MultiFactor Authentication using the Yubikey Token

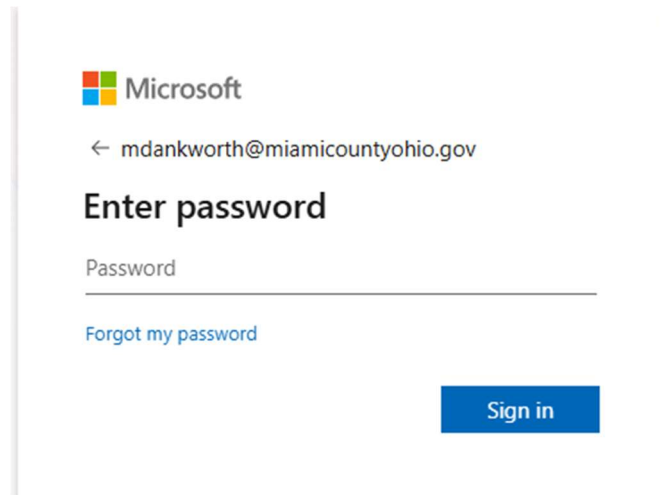
- On a desktop PC or laptop with an internet connection, go to www.aka.ms/mfasetup
- You will be prompted to log in to your account. Input your full County email address. If prompted, enter your County password you use to sign into the computer as well.



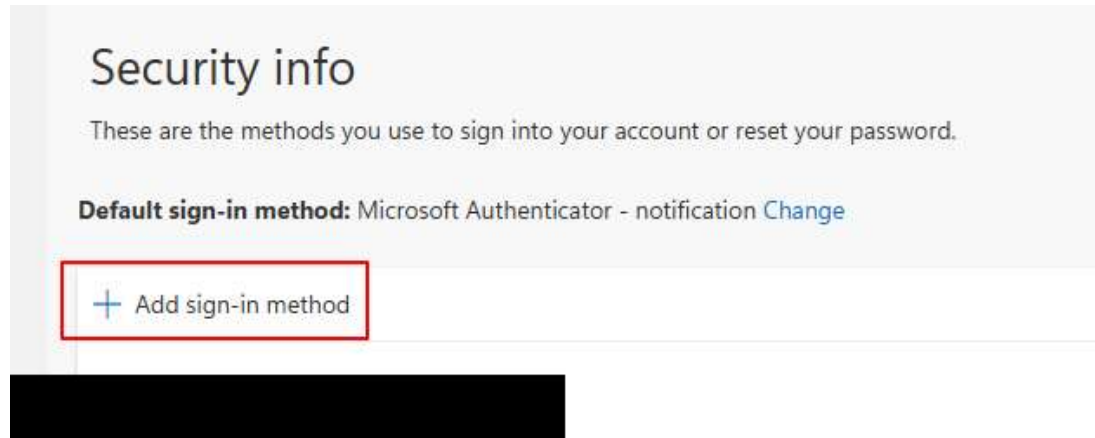
- **When prompted, select “Work or School account”**



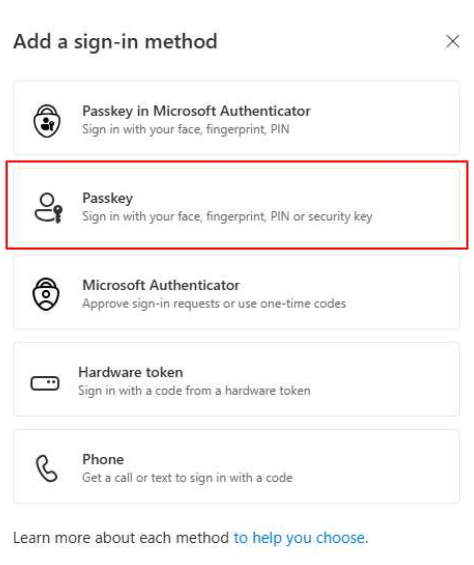
- Enter your (Miami County network) password



- Once logged in, select “Add sign-in Method



- Select Passkey



- **Select Next**

Sign in faster with your face, ×
fingerprint, or PIN



Create a passkey to sign in to your account. No apps, passwords, or codes needed.

Back


Next

- **Select Security Key**

 Windows Security

×

Choose where to save your passkey

 iPhone, iPad, or Android device

 Security key

Cancel

- Insert your Yubikey. If you have not yet assigned a pin for your Yubikey token you will be prompted to do so. If you have setup a pin you will be prompted to enter it.


Save your passkey

 mdankworth@miamicountyohio.gov 
Passkey for login.microsoft.com

You'll need to create a PIN for this security key.

 New Security Key PIN

Confirm Security Key PIN

 This will be saved to your security key. [Change](#)


- After creating or entering your pin, you will be prompted to touch the gold button on the yubikey. Tap and release this

Save your passkey

 mdankworth@miamicountyohio.gov 
Passkey for login.microsoft.com



Touch your security key.

 This will be saved to your security key. [Change](#)

- Complete the setup by naming your device. This is just a description and can be named whatever you like.

Let's name your passkey ×



Give your passkey a name to help you identify it later.

Next

Setup is now Complete